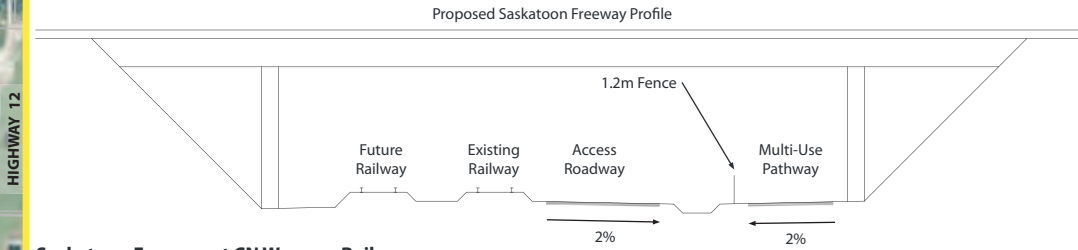
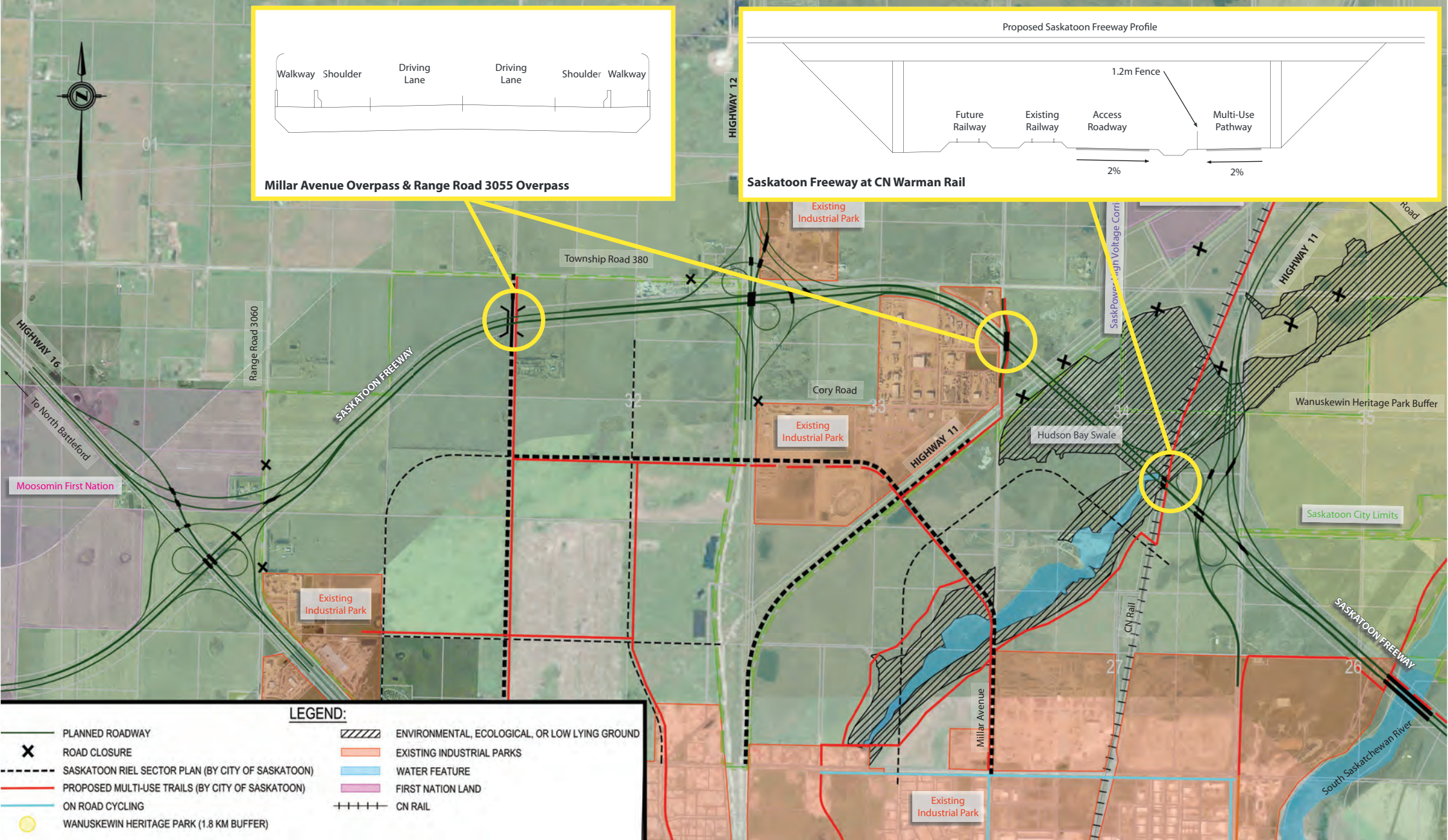


Millar Avenue Overpass & Range Road 3055 Overpass



Saskatoon Freeway at CN Warman Rail



**LEGEND:**

- PLANNED ROADWAY
- ROAD CLOSURE
- SASKATOON RIEL SECTOR PLAN (BY CITY OF SASKATOON)
- PROPOSED MULTI-USE TRAILS (BY CITY OF SASKATOON)
- ON ROAD CYCLING
- WANUSKEWIN HERITAGE PARK (1.8 KM BUFFER)
- ENVIRONMENTAL, ECOLOGICAL, OR LOW LYING GROUND
- EXISTING INDUSTRIAL PARKS
- WATER FEATURE
- FIRST NATION LAND
- CN RAIL

